

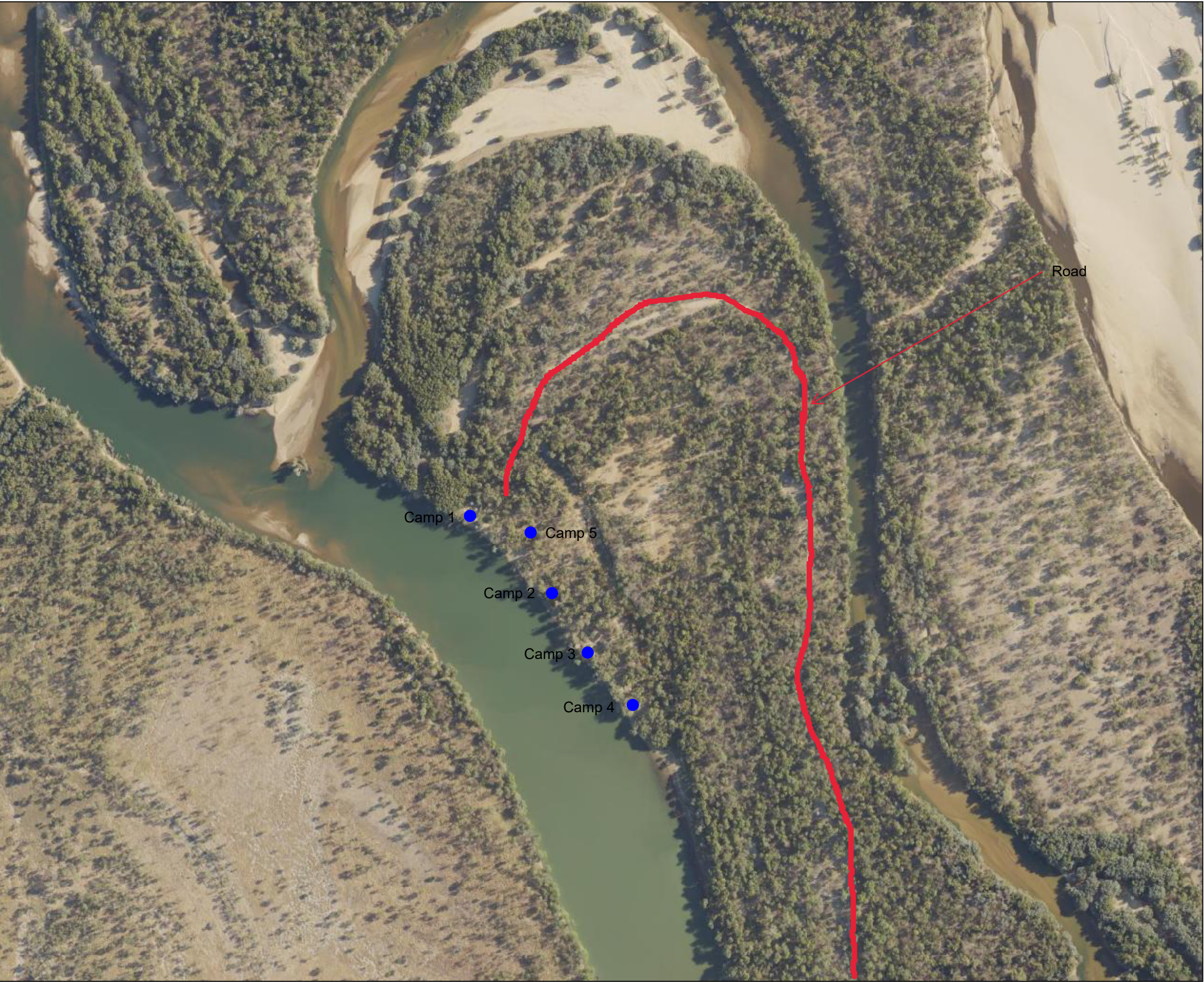
Surprise Creek camps.

Camps 1-5

15°15'19"S 141°46'30"E



15°15'19"S 141°47'20"E



Camp 1 4wd required to get to camp. Camp 1 is the first camp on the right hand side of road.

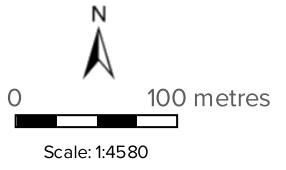
Camp 2 4wd required to get to camp. Camp 2 is the second camp on the left hand side of road.

Camp 3 4wd required to get to camp. Camp 3 is the third camp on the left hand side of road.

Camp 4 4wd required to get to camp. Camp 4 is the forth camp on the left hand side of road.

Camp 5 4wd required to get to camp. Camp 5 is the first camp on the left hand side of road, and is further back from the water.

Legend located on next page



Printed at: A3
Print date: 29/2/2024
Not suitable for accurate measurement.
Projection: Web Mercator EPSG 102100 (3857)

For more information, visit <https://qldglobe.information.qld.gov.au/help-info/Contact-us.html>

Includes material © State of Queensland 2024. You are responsible for ensuring that the map is suitable for your purposes. The State of Queensland makes no representation or warranties in relation to the map contents and disclaims all liability.

If imagery is displayed, imagery includes material © CNES reproduced under license from Airbus DS, all rights reserved © 21AT © Earth-i, all rights reserved, © Planet Labs PBC, 2023

15°15'56"S 141°46'30"E

15°15'56"S 141°47'20"E

Surprise Creek camps.

Camps 1-5

Legend

Railway



Railway station



Cities and Towns



Roads and tracks

- Motorway
- Highway
- Secondary
- Connector
- Local
- Restricted Access Road
- Mall
- Busway
- Bikeway
- Restricted Access Bikeway
- Walkway
- Restricted Access Walkway
- Non-vehicular Track
- Track
- Restricted Access Track
- Ferry
- Proposed Thoroughfare

Green bridges



Bridges



Tunnels



Attribution

Maxar

Includes material © State of Queensland (Department of Resources); © Commonwealth of Australia (Geoscience Australia); © 21AT, © Earth-i, all rights reserved, 2024.

© State of Queensland (Department of Resources) 2023