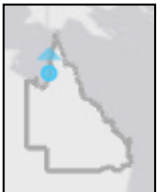


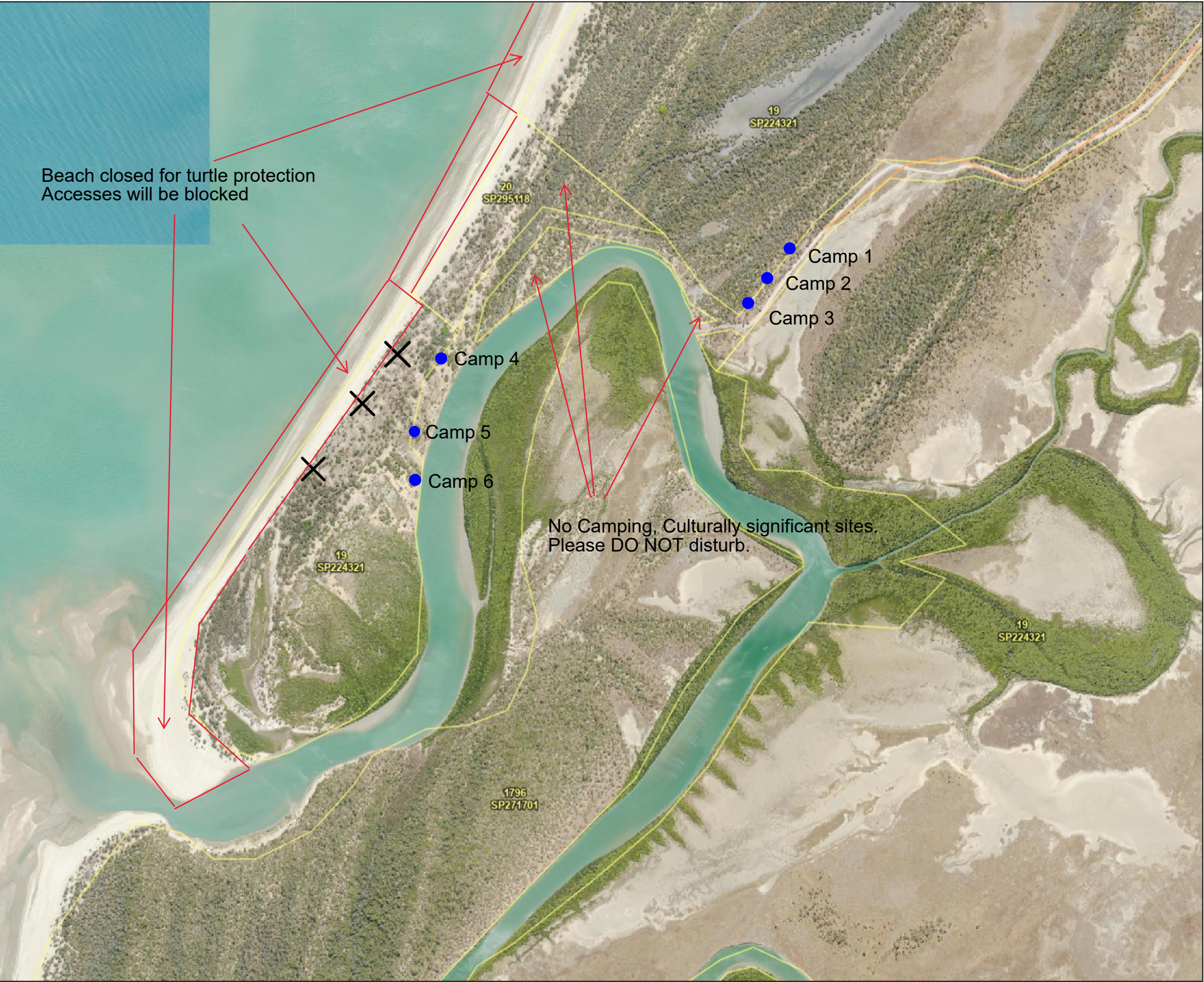
# Kowcamp Topsy Camps

Camps 1-6

15°28'39"S 141°28'41"E



15°28'39"S 141°31"E



Beach closed for turtle protection  
Accesses will be blocked

19  
SP224321

20  
SP295118

Camp 1

Camp 2

Camp 3

Camp 4

Camp 5

Camp 6

No Camping, Culturally significant sites.  
Please DO NOT disturb.

19  
SP224321

19  
SP224321

1796  
SP271701

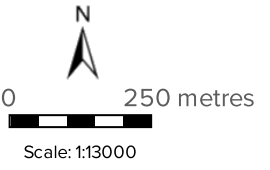
15°30'24"S 141°28'41"E

15°30'24"S 141°31"E

- Camp 1 No 4wd required to get into camp.
- Camp 2 No 4wd required to get into camp.
- Camp 3 No 4wd required to get into camp.
- Camp 4 Sand road access, 4wd required.
- Camp 5 Sand road access, 4wd required.
- Camp 6 Sand road access. 4wd required.

Camps are signed and subject to change.

Legend located on next page



Printed at: A3  
Print date: 26/2/2024

Not suitable for accurate measurement.  
Projection: Web Mercator EPSG 102100 (3857)

For more information, visit <https://qldglobe.information.qld.gov.au/help-info/Contact-us.html>

Includes material © State of Queensland 2024. You are responsible for ensuring that the map is suitable for your purposes. The State of Queensland makes no representation or warranties in relation to the map contents and disclaims all liability.

If imagery is displayed, imagery includes material © CNES reproduced under license from Airbus DS, all rights reserved © 21AT © Earth-i, all rights reserved, © Planet Labs PBC, 2023

# Kowcamp Topsy Camps

Camps 1-6



Legend



Attribution

### Land parcel



Parcel

### Land parcel - gt 1 ha



Parcel

### Land parcel - gt 10 ha



Parcel

### Land parcel - gt 1000 ha



Parcel

### Land parcel label

### Land parcel label - gt 1 ha

### Land parcel label - gt 10 ha

### Land parcel label - gt 1000 ha

### Cities and Towns



### Green bridges



### Roads and tracks



Motorway



Highway



Secondary



Connector



Local



Restricted Access Road



Mall



Busway



Bikeway



Restricted Access Bikeway



Walkway



Restricted Access Walkway



Non-vehicular Track



Track



Restricted Access Track



Ferry



Proposed Thoroughfare

### Bridges



### Tunnels



### Railway



### Railway station



### Maxar

Includes material © State of Queensland (Department of Resources); © Commonwealth of Australia (Geoscience Australia); © 21AT, © Earth-i, all rights reserved, 2024.

© State of Queensland (Department of Resources) 2023

© State of Queensland (Department of Resources) 2022